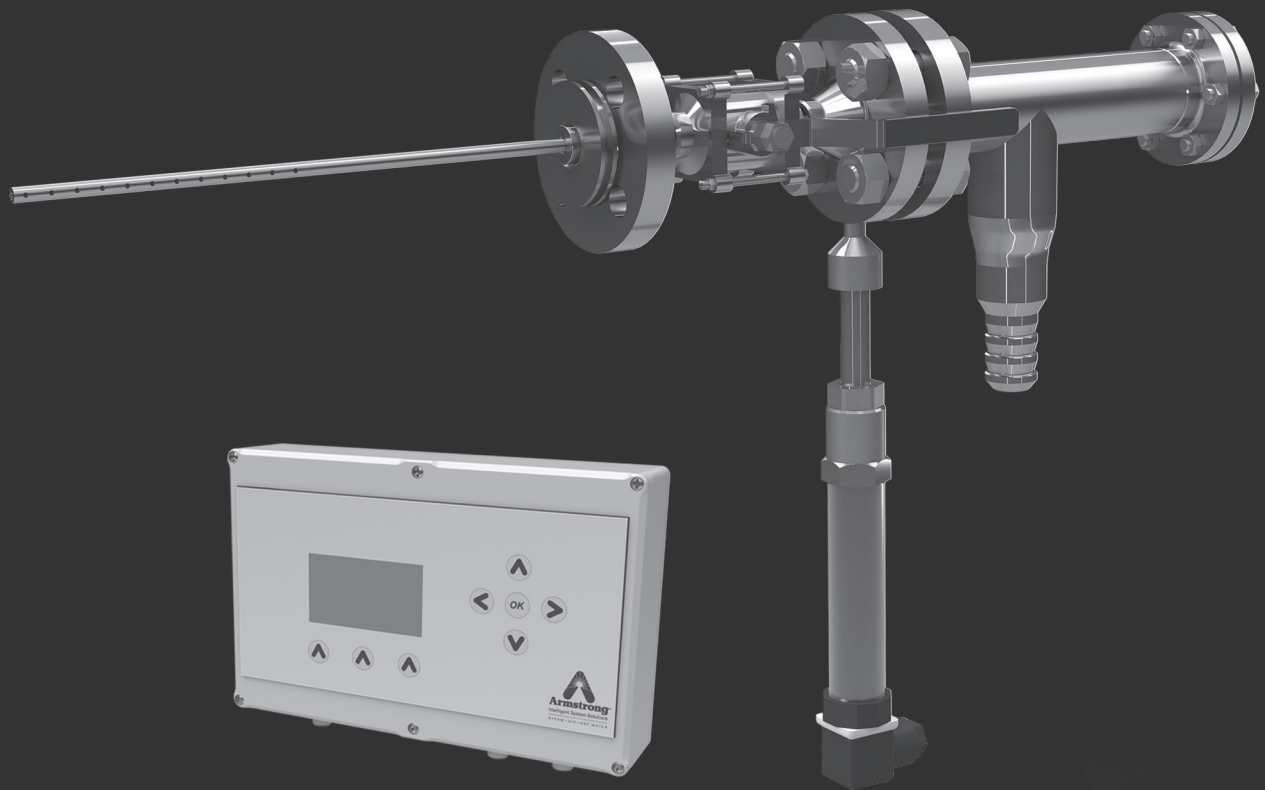




STEAM QM[®]-1

STEAM QUALITY MONITOR





Steam QM[®]-1 – Steam Quality Monitor

Armstrong[®]

Manual Versus Automatic

Until now steam dryness fraction measurement has been a time-intensive, unreliable and potentially unsafe process. Steam QM[®]-1 is more reliable. It is also safer than manual testing methods. When you compare Steam QM[®]-1 to manual testing methods the choice is clear:

Manual Method	Automatic Method
Description	
<ul style="list-style-type: none"> A sample of the steam is condensed during a limited time frame. Temperature and mass measurements allow calculation of the steam dryness. 	<ul style="list-style-type: none"> Reducing steam pressure to atmosphere allows measurement of steam dryness.
Disadvantages	
<ul style="list-style-type: none"> Time Consuming: Typically manual steam quality measurement requires two people, and can take up to one hour per measurement point. This does not include additional time required to complete necessary reports. Trending: Unable to trend steam dryness over a period of time. Unsafe: There are inherent safety risks involved in sampling live steam and condensate in a water receiver. Unreliable: Measurement results depend on the skill of the technician conducting the test. 	Advantages <ul style="list-style-type: none"> Quick and Easy: Steam QM[®]-1 is simple to install. Trending: Continuous measurements provide trending data over time. Safe: Once QM[®]-1 is installed it is much safer than manual measurement methods. Reliable: Steam QM[®]-1 is both reliable and accurate.

Steam QM [®] -1 Specifications	
Steam Operating Pressure Range	45-465 psig (3-32 barg)
Voltage	12 VAC or 15 - 24 VDC

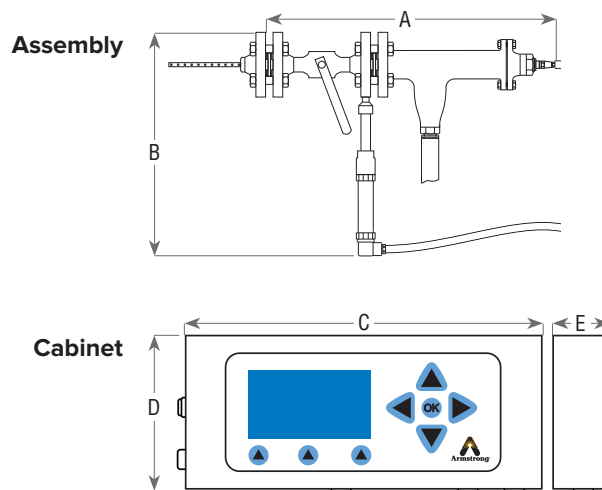
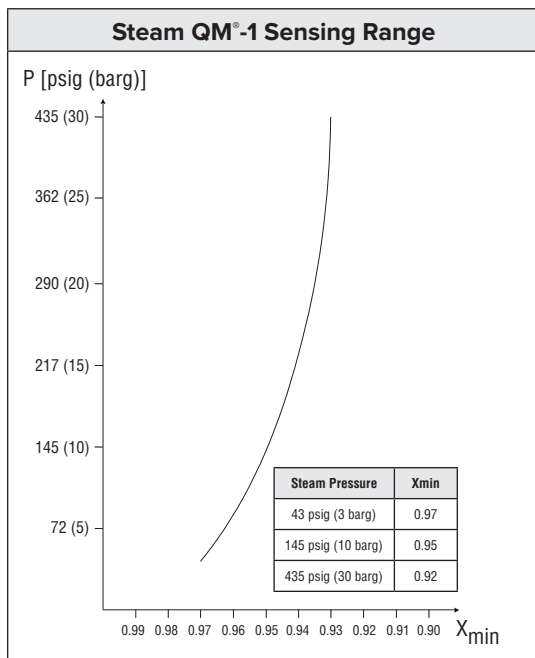
Steam QM [®] -1 Dimensions & Weight		
	in	mm
A – Assembly Width	20	500
B – Assembly Height	15	375
C – Cabinet Width	10	250
D – Cabinet Height	6.5	160
E – Cabinet Depth	2.5	60
Assembly Weight	20 lb	9 kg
Cabinet Weight	2 lb	0.9 kg

Steam QM[®]-1 Package Includes:

Insulation Cover & All Necessary Accessories

Optional Feature:

Data Logger



Armstrong International

North America • Latin America • India • Europe / Middle East / Africa • China • Pacific Rim

armstronginternational.com



INTELLIGENT SOLUTIONS IN STEAM, AIR, AND HOT WATER

Armstrong International

North America • Latin America • India • Europe / Middle East / Africa • China • Pacific Rim

armstronginternational.com